



**ALASKA DIVISION OF HOMELAND SECURITY &  
EMERGENCY MANAGEMENT**



**SITUATION REPORT 23-066 • MARCH 07, 2023**

Toll-Free 1.800.478.2337

Anchorage Area 907.428.7000

SEOC 907.428.7100

<p><b><u>SEOC Preparedness Level</u></b> Level 1 – Routine Operations</p>	<p><a href="http://ready.alaska.gov">http://ready.alaska.gov</a></p>	<p><b><u>National Terrorism Advisory System:</u></b> <a href="#">Read the NTAS Bulletin here</a></p>
<p><b><u>Maritime Security (MARSEC)</u></b> Level:1-Minimum Appropriate Security Measures</p>	<p><b>WHO Novel Coronavirus Pandemic (COVID-19):</b> <a href="#">2019 Novel Coronavirus</a></p>	<p><b><u>Alaska Military Installation Force Protection Level:</u></b> FPCON Bravo</p>

(Significant changes from previous situation reports are in red.)

**Significant Issues:**

None.

**State of Alaska Department of Health (DOH)**

The DOH is leading the State of Alaska COVID-19 Recovery, supported by the SEOC and other state departments as required.

For current COVID-19 information, see:

<https://covid19.alaska.gov/>

<https://www.cdc.gov/coronavirus/2019-ncov/index.html>

**NTAS Bulletin**

The U.S. Department of Homeland Security has issued an updated National Terrorism Advisory Bulletin. The updated bulletin can be viewed at the below link

To read current or expired advisories, click the link below:

<https://www.dhs.gov/national-terrorism-advisory-system>

**Travel Alerts and Conditions**

For current driving conditions dial 511 or link to <https://511.alaska.gov/>

**Barry Arm Landslide / Tsunami Risk**

For the latest information on the Barry Arm Landslide and Tsunami risk, click here:

[DGGs Barry Arm Landslide and Tsunami Hazard](#)

**Recent Earthquakes**

USGS Earthquake Information: <http://earthquake.usgs.gov/>

National Tsunami Warning Center: <http://tsunami.gov/>

## Alaska Volcanoes

**Great Sitkin** Alert Level: **Watch** and Aviation Color Code: **Orange**

**Aniakchak** Alert Level: **Advisory** and Aviation Color Code: **Yellow**

**Semisopchnoi** Alert Level: **Advisory** and Aviation Color Code: **Yellow**

**Takawangah** Alert Level: **Advisory** and Aviation Color Code: **Yellow**

**Trident** Alert Level: **Advisory** and Aviation Color Code: **Yellow**

For Alaska Volcano updates, go to: <https://www.avo.alaska.edu/>

## Air Quality Index (AQI) Advisories

For the most up to date Air Quality Index Advisories:

<http://dec.alaska.gov/Applications/Air/airtoolsweb/Home/Index>

## Spills of Oil and Hazardous Substances

The ADEC Spill Prevention and Response page is located at:

<http://dec.alaska.gov/spar/ppr/spill-information/response/>

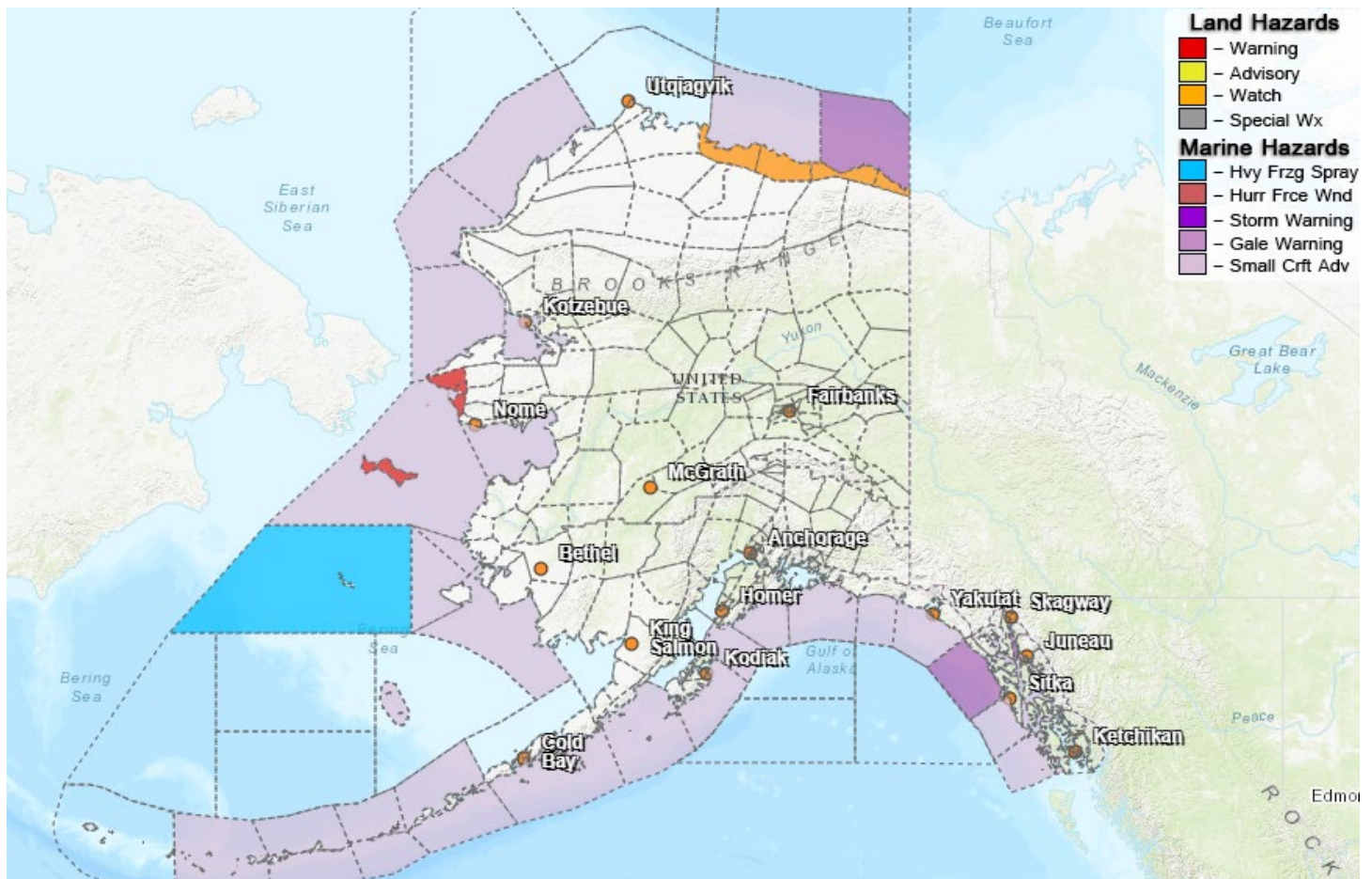
## Alaska Cyber Security Information

State Employees may sign up for cyber security notifications and alerts at

<https://oit.alaska.gov/security>

CISA-Cybersecurity Services and Tools: [www.cisa.gov/free-cybersecurity-services-and-tools](http://www.cisa.gov/free-cybersecurity-services-and-tools)

## Significant Weather:



Winter Storm Warnings are in effect for the following areas:

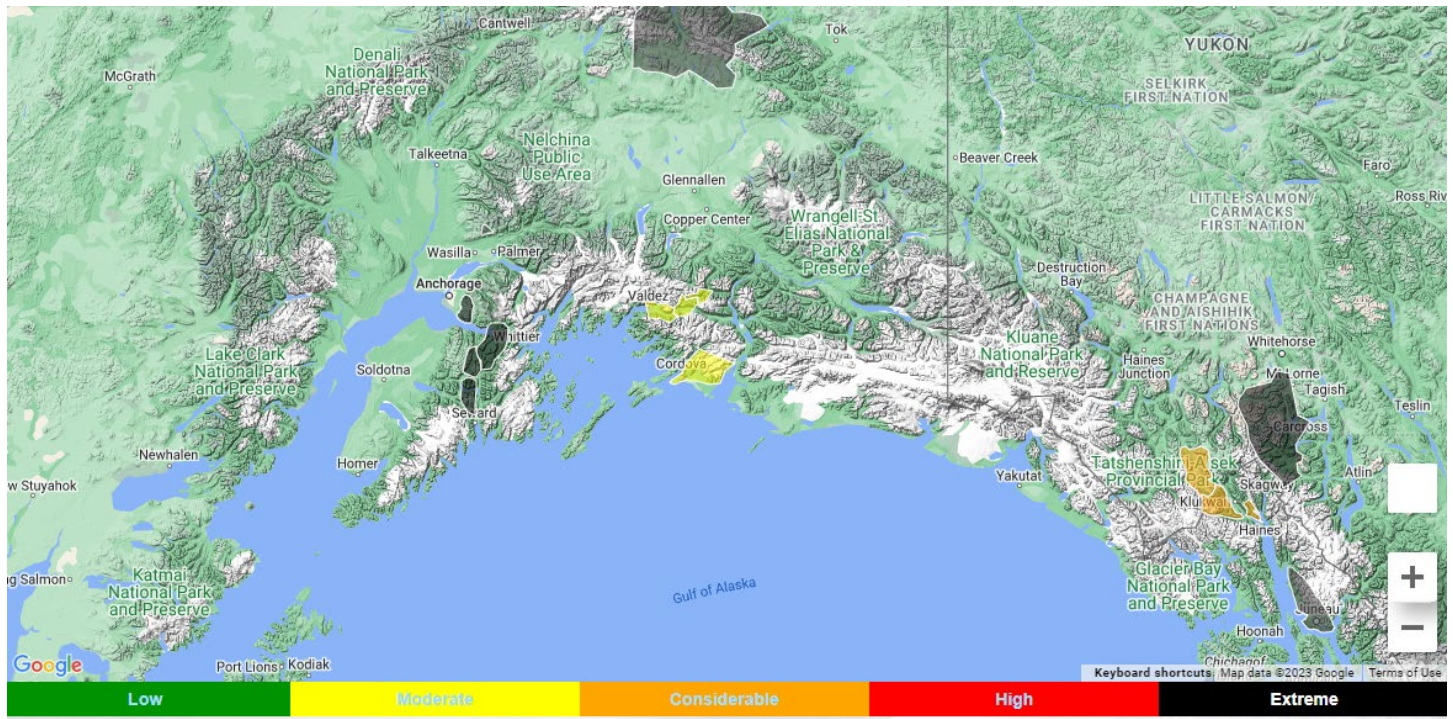
- Southern Seward Peninsula Coast from Friday evening through Monday morning for snow accumulation of 8 to 18 inches with winds gusting to 55mph through 9:00AM Today.
- St Lawrence Island and Bering Strait Coast - Heavy mixed precipitation expected. Additional snow accumulations of 8 to 12 inches and ice accumulations up to 0.05 inches expected. Winds gusting as high as 40 mph through 9:00AM Today

The following Winter Weather Watches are in effect:

- **Central and Eastern Beaufort Sea Coasts – Heavy snow and blowing snow possible. Total snow accumulations of up to two inches possible. Winds could gust as high as 35 mph. Visibility reduced to one quarter mile or less from Wednesday evening through Thursday afternoon.**

For more information and the most current weather, go to: <http://www.weather.gov/arh>.

### **Avalanche Forecast:**



- Haines – Considerable avalanche conditions above 1,500ft and moderate below 1,500 ft.
- Valdez – **Moderate avalanche danger at all elevations.**
- Cordova area: Moderate advisory level above 2,000ft and low advisory level below 2,000ft.
- Turnagain Pass – **Moderate advisory level above 1,000ft, low advisory level below 1,000 ft.**
- Hatcher Pass – **Moderate advisory level at all elevations and on slopes 35° and steeper.**

Check the Avalanche Forecast Center closest to your area for the most up to date information on avalanche potential. <https://alaskasnow.org> or <https://www.weather.gov/afc/avalancheweather>

**The Next Situation Report:** will be **08 March 2023**. A significant change in the situation or the threat level will prompt an interim report. This report is posted on the internet at <https://ready.alaska.gov/sitrep>.

To register for email distribution, go to <http://list.state.ak.us/mailman/listinfo/dhsem.situation.report>. Direct questions regarding this report to the SEOC at 907-428-7100 or [seoc@alaska.gov](mailto:seoc@alaska.gov)